

# Chromebook 11 3189

## Quick Start Guide

Guide d'information rapide  
Guia de iniciação rápida  
Hızlı Başlangıç Kılavuzu  
دليل البدء السريع

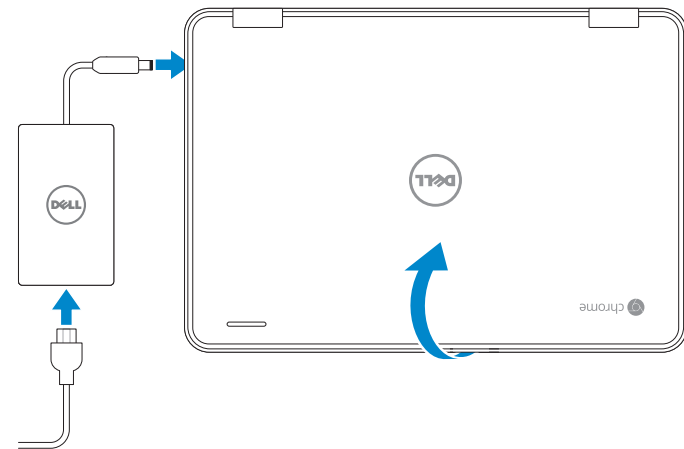
chromebook



## 1 Connect the power adapter and open the display to turn on your computer

Brancher l'adaptateur d'alimentation et ouvrir l'écran pour mettre l'ordinateur sous tension

Ligue o carregador e abra o ecrã para ligar o seu computador  
Güç adaptörünü bağlayın ve bilgisayarınızı açmak için ekranı açın  
توصيل مهبطي التيار وفتح الشاشة لتشغيل جهاز الكمبيوتر الخاص بك



## 2 Finish Chromebook setup

Terminer la configuration du Chromebook  
Concluir a configuração do Chromebook  
Chromebook kurulumunu tamamlayın | Chromebook إعداد



### Connect to your network

Se connecter à un réseau  
Estabeleça ligação à rede  
Ağınıza bağlanın  
التوصيل بالشبكة



### Wait for update to finish

Attendre la fin de la mise à jour  
Aguarde pela conclusão da atualização  
Güncellemenin tamamlanmasını bekleyin  
الانتظار حتى ينتهي التحديث

**NOTE:** Your computer will restart after Google update.

**REMARQUE :** l'ordinateur redémarrera après la mise à jour de Google.

**NOTA:** O seu computador será reiniciado após a atualização do Google.

**NOT:** Bilgisayarınız, Google güncellemesinden sonra yeniden başlayacaktır.

**ملاحظة:** سوف تتم إعادة تشغيل جهاز الكمبيوتر الخاص بك بعد تحديث Google.



### Sign in to your Google account or create a new account

Se connecter à un compte Google ou créer un nouveau compte  
Inicie sessão na sua conta do Google ou crie uma nova conta  
Google hesabınıza giriş yapın veya yeni bir hesap oluşturun

تسجيل الدخول إلى حسابك في Google أو إنشاء حساب جديد

## 3 Register Chromebook

Enregistrer le Chromebook | Registrar o Chromebook  
Chromebook'u kaydedin | Chromebook تسجيل



[Dell.com/support/registration](https://www.dell.com/support/registration)

For details on your Dell Limited Hardware Warranty and any service contracts you purchased (as detailed in your invoice), please visit the links below:

Pour plus de détails sur votre Garantie matérielle limitée Dell et autres contrats de service auxquels vous avez souscrit (comme il est précisé dans la facture), veuillez cliquer sur les liens ci-dessous :

Para obter detalhes sobre a Garantia Limitada de Hardware da Dell e sobre quaisquer contratos de serviço adquiridos (conforme detalhado na sua fatura), visite as ligações abaixo:

Satın aldığınız Dell Sınırlı Donanım Garantiniz ve tüm servis sözleşmeleri (ayrıntılarının faturanızda verildiği şekilde) ile ilişkili ayrıntılar için lütfen aşağıdaki bağlantıları ziyaret edin:

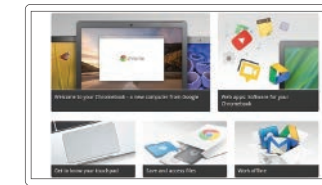
للحصول على تفاصيل بشأن ضمان الأجهزة المحدود من شركة Dell وأي عقود خدمة تمت بشرائها (كما هو مفصل في الفاتورة الخاصة بك)، يرجى زيارة الروابط أدناه:

Dell Limited Hardware Warranty: [Dell.com/warranty](https://www.dell.com/warranty)

Dell Consumer Service Contracts: [Dell.com/servicecontracts](https://www.dell.com/servicecontracts)

## Explore resources

Explorer les ressources | Explorar os recursos  
Kaynakları keşfedin | اكتشاف الموارد



**Get started**

Commencer  
Introdução  
Başlangıç  
بدء التشغيل

## Help Center

Centre d'assistance | Centro de ajuda  
Yardımler Merkezi | مركز المساعدة

## Community

Communauté | Comunidade  
Topluluk | المجتمع

## Business and education

Affaires et éducation | Negócio e educação  
İş ve eğitim | الأعمال والتعليم

## Dell Chromebook

Dell Chromebook | Dell Chromebook  
Dell Chromebook | Dell Chromebook

## Product support and manuals

Assistance produits et manuels | Suporte e manuais do produto  
Ürün desteği ve kılavuzlar | دعم المنتج والدلائل

## Contact Dell

Contacter Dell | Contactar a Dell  
Dell'e başvurun | Dell الاتصال بـ

## Regulatory and safety

Règlementations et sécurité | Regulamentos e segurança  
Mevzuat ve güvenlik | ممارسات الأمان والممارسات التنظيمية

## Regulatory model

Modèle réglementaire | Modelo regulamentar  
Yasal model numarası | الموديل التنظيمي

## Regulatory type

Type réglementaire | Tipo regulamentar  
Yasal tür | النوع التنظيمي

## Computer model

Modèle de l'ordinateur | Modelo do computador  
Bilgisayar modeli | موديل الكمبيوتر

[support.google.com/chromebook](https://support.google.com/chromebook)

[chromebook.com/community](https://chromebook.com/community)

[support.google.com/chrome/a/](https://support.google.com/chrome/a/)

[chromebook.com/dell](https://chromebook.com/dell)

[Dell.com/support](https://Dell.com/support)

[Dell.com/support/manuals](https://Dell.com/support/manuals)

[Dell.com/contactdell](https://Dell.com/contactdell)

[Dell.com/regulatory\\_compliance](https://Dell.com/regulatory_compliance)

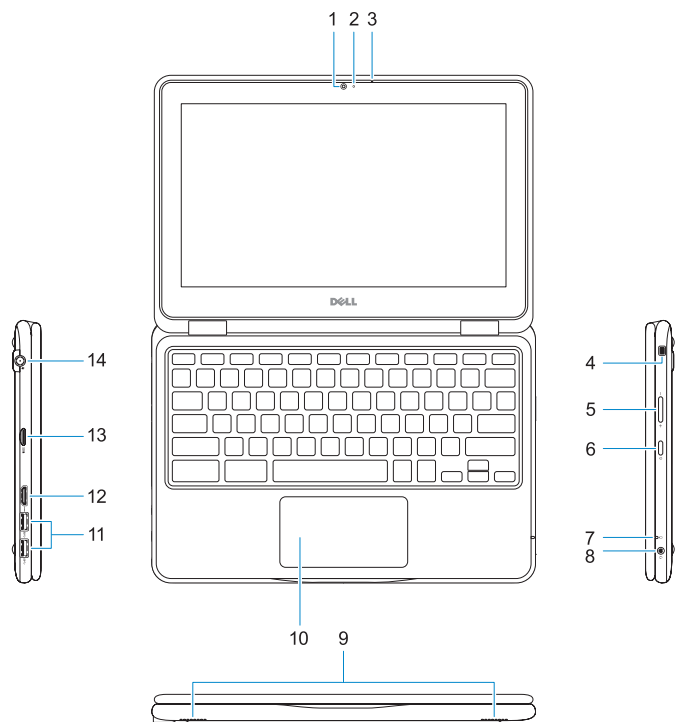
**P26T**

**P26T001**

**Chromebook 11 3189**

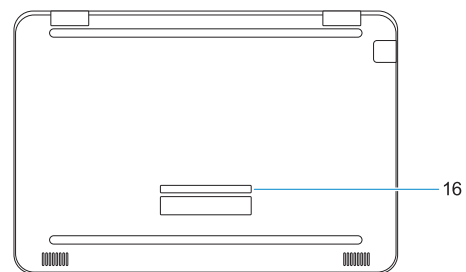
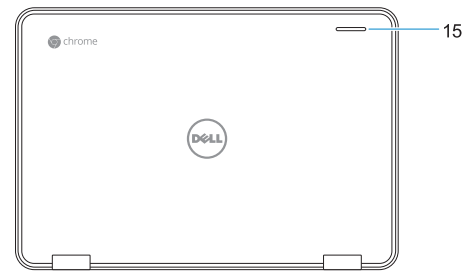
# Features

Caractéristiques | Funcionalidades | Özellikler | الميزات



1. Camera
2. Camera status light
3. Microphone
4. Noble wedge lock slot
5. Volume control button
6. Power button
7. Battery status light
8. Universal audio jack
9. Speakers
10. Touchpad

11. USB 3.0 ports
12. HDMI port
13. microSD card reader
14. Power connector port
15. Dell Activity Light
16. Service tag label



1. Webcam
2. Voyant d'état de la webcam
3. Microphone
4. Emplacement pour verrou Noble
5. Bouton de contrôle du volume
6. Bouton d'alimentation
7. Voyant d'état de la batterie
8. Prise jack audio universelle
9. Haut-parleurs
10. Pavé tactile

11. Ports USB 3.0
12. Port HDMI
13. Lecteur de cartes microSD
14. Port du connecteur d'alimentation
15. Voyant d'activité Dell
16. Étiquette du numéro de service

1. Kamera
2. Kamera durum ışığı
3. Mikrofon
4. Noble wedge kilit yuvası
5. Ses seviyesi kontrol düğmesi
6. Güç düğmesi
7. Pil durum ışığı
8. Evrensel ses jeki
9. Hoparlörler
10. Dokunmatik yüzey

11. USB 3.0 bağlantı noktaları
12. HDMI bağlantı noktası
13. microSD kart okuyucu
14. Güç konektörü bağlantı noktası
15. Dell Etkinlik Işığı
16. Servis etiketi çıkartması

1. Câmera
2. Luz de estado da câmara
3. Microfone
4. Ranhura para cadeado Noble Wedge
5. Botão de controlo do volume
6. Botão para ligar/desligar
7. Luz de estado da bateria
8. Entrada de áudio universal
9. Altifalantes
10. Paineil táctil

11. Portas USB 3.0
12. Porta HDMI
13. Leitor de cartões microSD
14. Porta para carregador
15. Luz de atividade da Dell
16. Rótulo da etiqueta de serviço

11. منفذًا USB 3.0
12. منفذ HDMI
13. قارئ بطاقة microSD
14. منفذ موصل التيار
15. مصباح نشاط Dell
16. ملصق علامة الخدمة

1. الكاميرا
2. مصباح حالة الكاميرا
3. الميكروفون
4. فتحة قفل Noble wedge
5. زر التحكم في مستوى الصوت
6. زر التيار
7. مصباح حالة البطارية
8. مقبس صوتي شامل
9. مكبرات الصوت
10. لوحة اللمس



06452VA00



Printed in China.  
2016-12

© 2016 Dell Inc. or its subsidiaries.

© 2016 Google Inc.